

Quick Installation Guide

beroNet VoIP Gateways



■ ■ ■ Made in Germany

The VoIP Experts

Delivering high quality VoIP hardware since 2002.

www.beronet.com

beroNet 

Cloud managed & monitored
VoIP Gateways and Appliances

Getting Started

Before you start

1. **Check the items you received** and compare them with the products you ordered to ensure that you have exactly what you need for your installation.
2. **Review our documentation** to ensure that you are fully prepared for your installation. You can find all beroNet documentation at: wiki.beronet.com.

Getting to know your gateway

“BFBox” Model beroNet Modular Gateways:



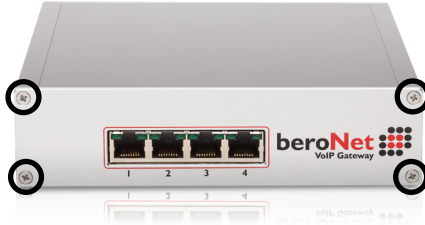
T-Adapters (split each port into two ports):



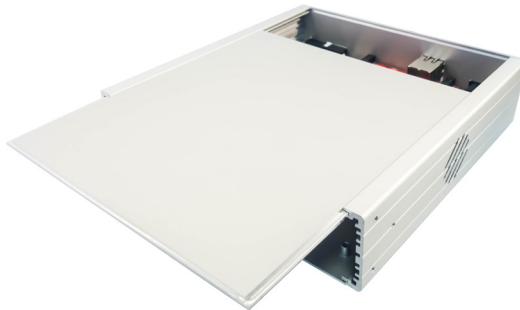
Adding additional modules

Please note: our small business line gateways (black boxes) are not modular. Opening a small business line device can cause permanent damage. Always backup your device before changing the hardware.

1. Remove the front plate by removing these four screws.



2. Remove the top cover.



3. Add your module, and reassemble your device.



Initial Setup

Physical Setup

1. **Connect the power adapter to the device** and plug it in.
2. **Connect a LAN cable* to the device** and connect it with your network.
3. **Connect your telephony cables.**
Pinout information can be found at: wiki.beronet.com
Select “Gateways and Cards”, “Product Manual”, “Physical Setup”

Network Setup and GUI

1. **Using a Windows or Linux computer**, download and run the “BFdetect” tool found at wiki.beronet.com, under “Tools and Downloads”

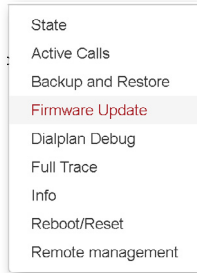
```
Please wait, while we're scanning on all interfaces for beroNet devices...
1) serial: 2-16-0000014641 type: Gateway appfs: 16.05 mac: d8:df:0d:00:2b:b7 ip: 19.0.0.5
Please, select a device (enter 'q' to leave): █
```

2. **Set a static IP address using BFdetect**
 - a. Start BFdetect and select your device
 - b. Select “d” to switch DHCP off
 - c. Select “i” to change your IP address and “n” for your netmask
 - d. Select “g” to change your default gateway
 - e. Select “m” and enter a DNS-Nameserver
 - f. Select “s” to save and quit - your gateway will restart
3. **Use a browser to navigate to the device IP address** and login using the credentials: admin / admin

*LAN cable is not included.

Update your gateway to the newest firmware

1. Hover over “Management” and select “Firmware Update”



2. Select “Reboot in Update Mode” - wait for your device to restart



3. Choose the most recent stable version and select “Download”

Name	Type	Release Notes	Action
Firmware 16.05	appfs	open	<input type="button" value="Download"/>

4. When the download is completed - click install

Warning: do not turn off your device or remove it from power while the update is in process. If you are unsure if the update is complete, open a new browser window and navigate to the VoIP gateways IP address.

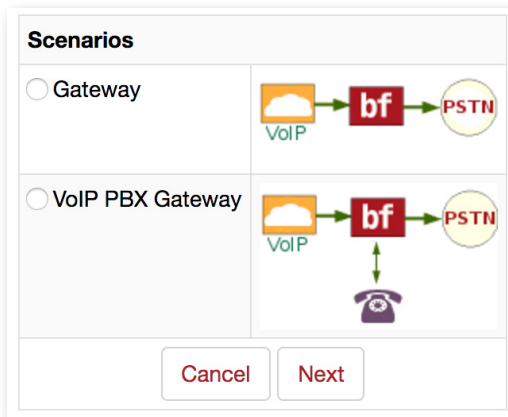


Device Configuration

Configuration using the beroNet Wizard

Easy Configuration Wizard

1. Select “Easy Configuration Wizard” to launch the wizard
2. Choose your scenario
 - a. Gateway: connect a Legacy PBX system with a SIP Trunk or Provider
 - b. VoIP PBX Gateway: connect an IP-PBX with ISDN, analog or GSM



3. Enter the requested information, when completed select “finish”

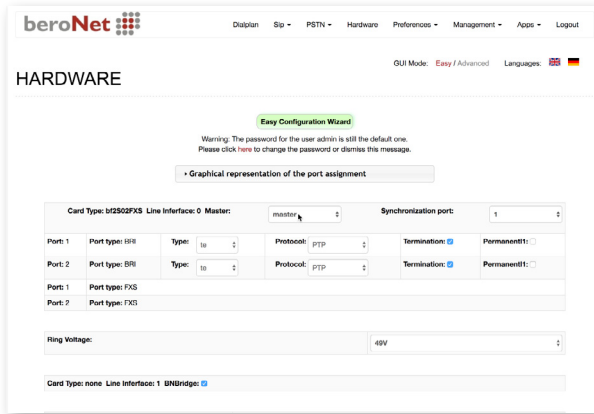


Manual configuration of a beroNet VoIP Gateway

Please Note: this is a short overview of a basic configuration. For a more detailed description, visit our online documentation at wiki.beronet.com.

1. Configure your hardware

- a. Navigate to “Hardware” and confirm your hardware configuration
- b. When using PRI ports, confirm that you set the correct Type (TE or NT)

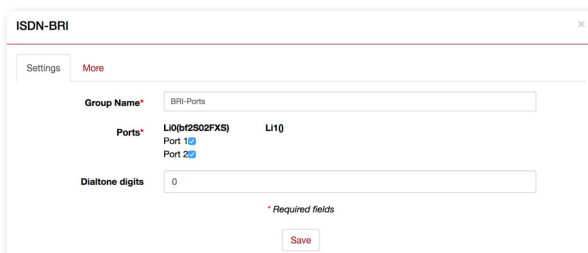


2. Place your ISDN, analog or GSM ports in groups

- a. Hover over “PSTN” and select your port type (ISDN, analog, etc.)



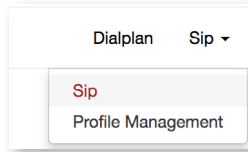
- b. Select “Add” and create a group of your ports - save when finished



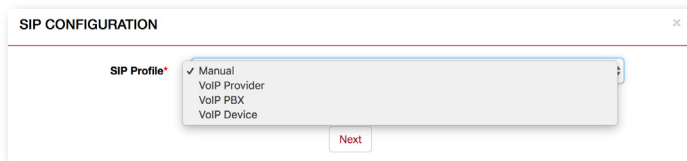
continued on the next page

3. Add your SIP connections

- a. Hover over “SIP” and select “SIP”



- b. Select “Add” and choose manual or a predetermined profile

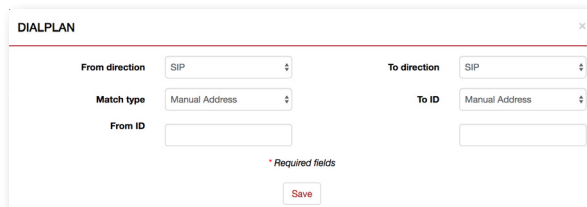


- c. Enter the requested information - save when finished

4. Configure your Dialplan rules

- a. Select “Dialplan” and click “Add”

- b. Choose the “from direction” and “to direction” and check “reverse rule”



- c. Save and repeat this process for any additional unique rules

5. Click the “Activate” and wait until the activation is finished

Security

Use a secure password

beroNet VoIP Gateways come with default credentials which are “admin / admin”. This information is well-known and written on our documentation which is available online. It is therefore very important to change the password and to set a secure one.

Deactivate BFdetect

BFdetect enables you to find and manage the IP settings of beroNet VoIP Gateways on your network. It should be used once and then deactivated in order to prevent somebody from messing with it. To deactivate it, navigate to “network settings” under “preferences” and click on the option “Disable BFdetect”.

Use HTTPS

HTTPS is an important part of VoIP security. In order to have an encrypted connection on your gateway, also from LAN, we advise you to use https. It is a self-signed certificate so you need to add it to the exceptions of your browser.

Keep your gateway behind a firewall

A VoIP gateway is more secure when it is configured behind a firewall and only accessible from the LAN. NAT and firewall rules should then be set in order to make sure it works properly.

If not behind a firewall, configure the ACL

If your beroNet VoIP Gateway is directly accessible from the Internet, set ACL to limit the access on your device. As a general rule you should restrict outside access to your device as much as possible.

Additional Services

Extend your Warranty

All beroNet products are covered by a standard manufacturer warranty. With the “Extended Warranty Service” you can extend your warranty to a total of five years.

More information can be found at:
<http://www.beronet.com/services/#warranty>



beroNet Support Services

Support	Description	Price
Free	<ul style="list-style-type: none">• Basic assistance for beroNet products• Response within 48 hours on business days	Free
On-Demand Support	<ul style="list-style-type: none">• One hour dedicated, planned support• Next available slot• Basic help with 3rd party technology	99,- € for first hour 25,- € for every following 15 minutes
On-Site Support	Full-day onsite support, including travel in DE and EU countries. <ul style="list-style-type: none">• Two weeks advance notice required• Receive a complete written report	Price per day: DE: 1200,- € EU: 1400,- €
Support Contract	<ul style="list-style-type: none">• Dedicated support agent• Response within 4 hours on business days• Priority in resolving the issue• Fast ticket escalation	25 % of total list price At least 200 € per year

Free support is available at: support.beronet.com

For paid services, please visit: www.beronet.com/support

beroNet GmbH
Friedrichstrasse 231, Haus D
10969 Berlin Germany

beroNet 
Cloud managed & monitored
VoIP Gateways and Appliances