

beroNet Gateway Assembly Guide



Content

- 1. Mounting beroNet Gateway PCIe-Card and Modules**
- 2. Mounting GSM Modules**
- 3. Mounting GSM_Extension Kit**

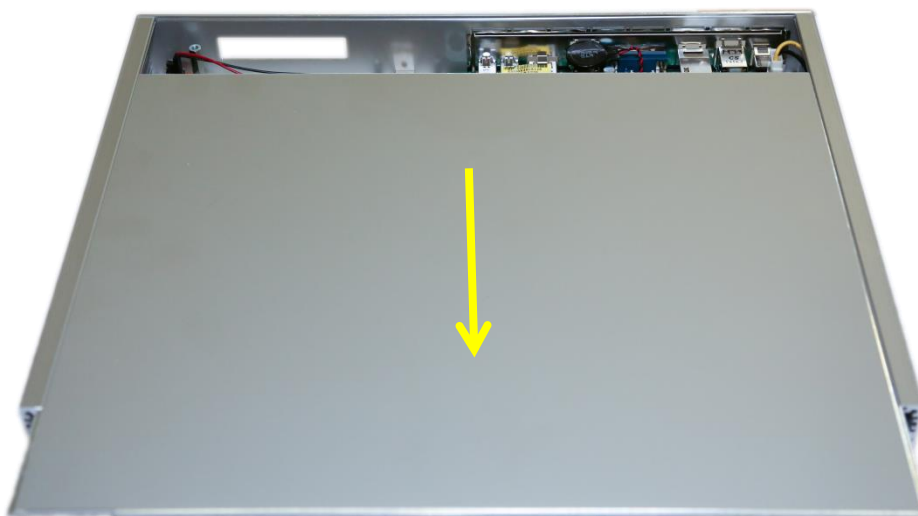
1. Mounting beroNet Gateway PCIe-Card and Modules



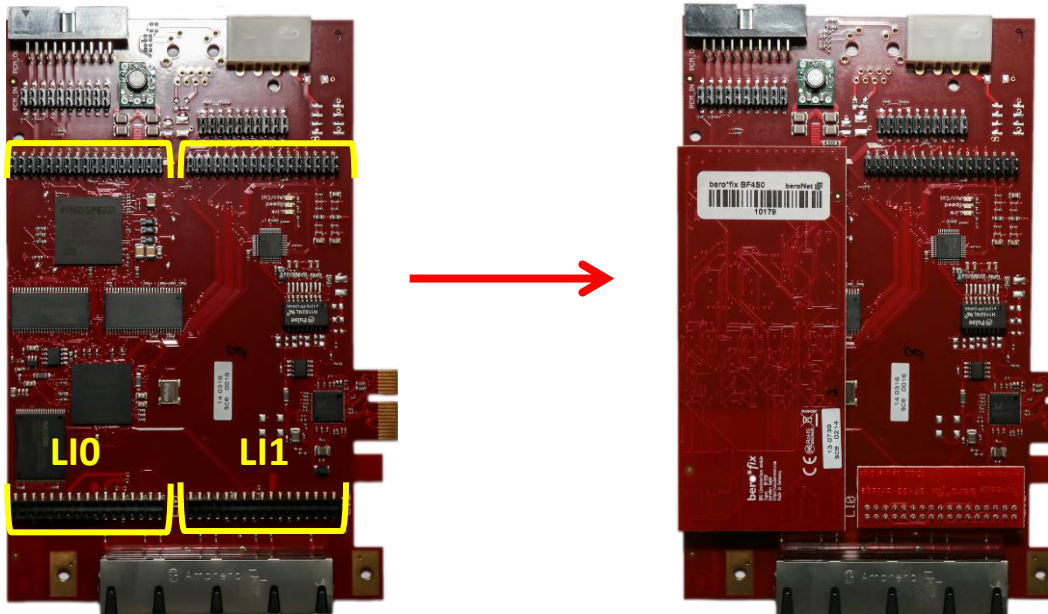
Step 1: Detach the back plate of the appliance.



Step 2: Remove the top cover by pushing it towards the back of the appliance.

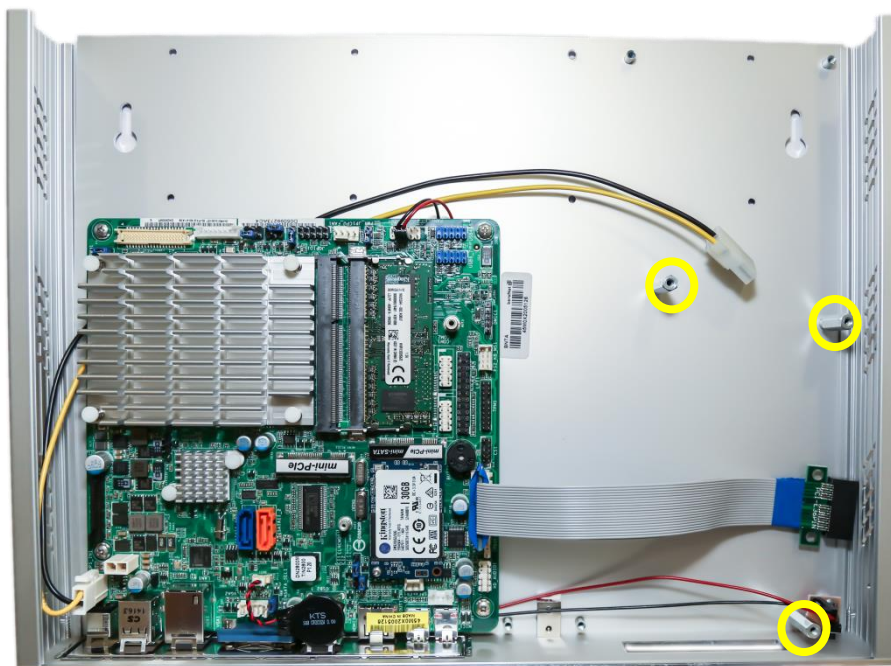


Step 3: In case of a Telephony Appliance with an empty beroNet Gateway PCIe-Card (BF400e or BF1600e) and in order to upgrade it with additional modules, the PCIe-Card has to be removed from it. Equip the PCIe-Card with the modules of your choice.

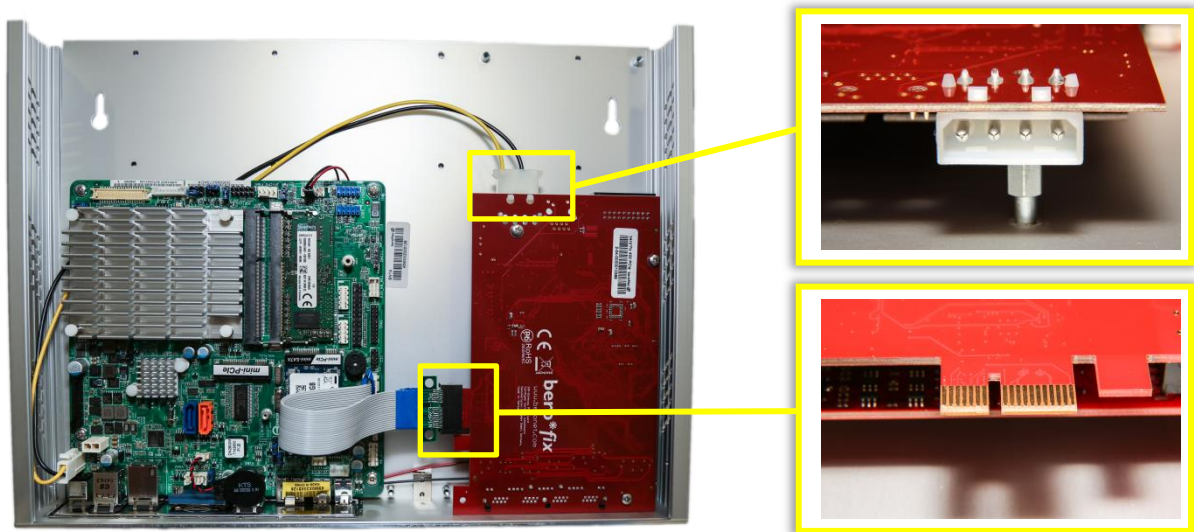


The PCIe-Card has to be placed with the modules face-down on the 3 bolts.

NOTE: The beroNet Telephony Appliance Rev. 2 contains 3 mounting bolts whereas Rev. 1 contains 4 mounting bolts.



Step 4: After you have mounted the PCIe-Card to the Telephony Appliance it has to be connected to the mainboard.
Use the pre-attached PCIe Riser cable and the 4-pin molex connector.



Step 5: Push the top cover back in and place the back plate back on.
Done!

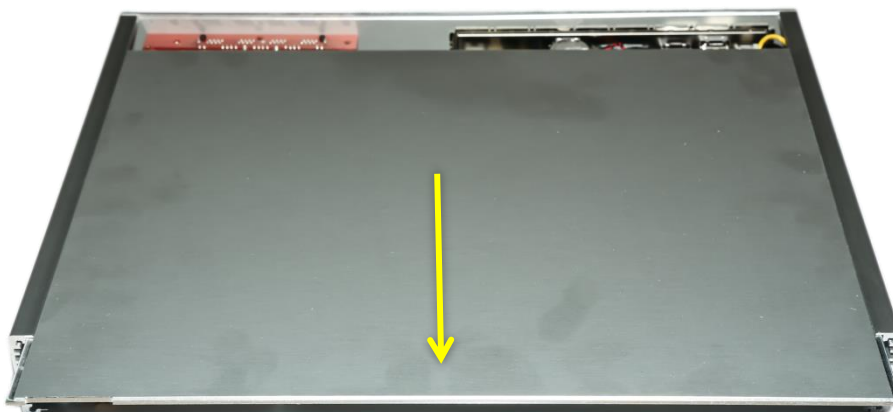
2. Mounting GSM Modules



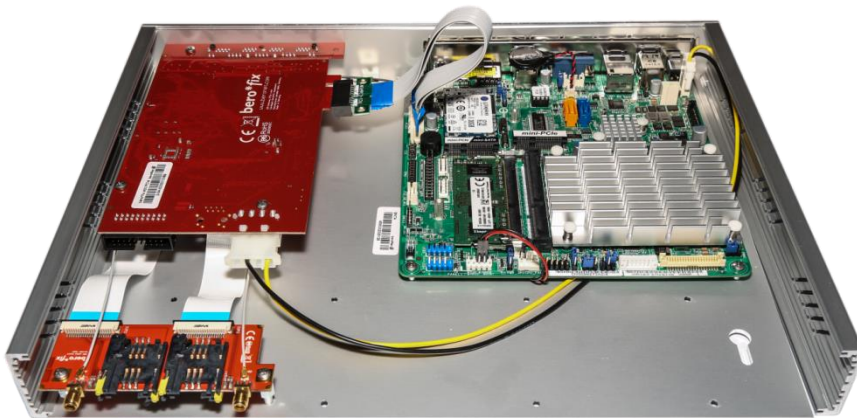
Step 1: Detach the GSM antennas and remove the SIM holders from the Telephony Appliance. Remove the backplate.



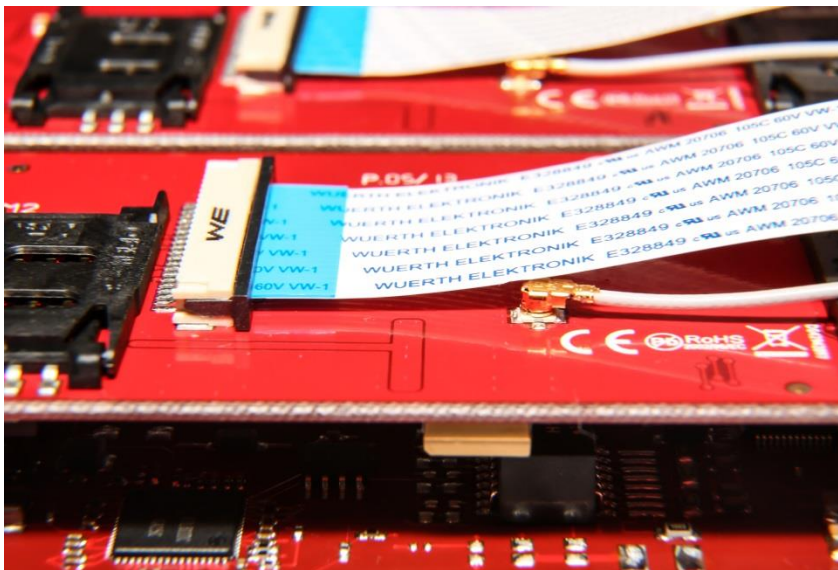
Step 2: Remove the top cover by pushing it towards the back of the Telephony Appliance.



Step 3: The PCIe-Card and the GSM_Extension Kit have to be removed in order to mount additional modules.



If mounting an additional 2GSM module use the pre-attached SIM and antenna cables.



Step 4: After the PCIe-Card has been upgraded mount it back on together with the GSM_Extension Kit. Connect the 4-pin Molex power cable and the PCIe Riser cable.

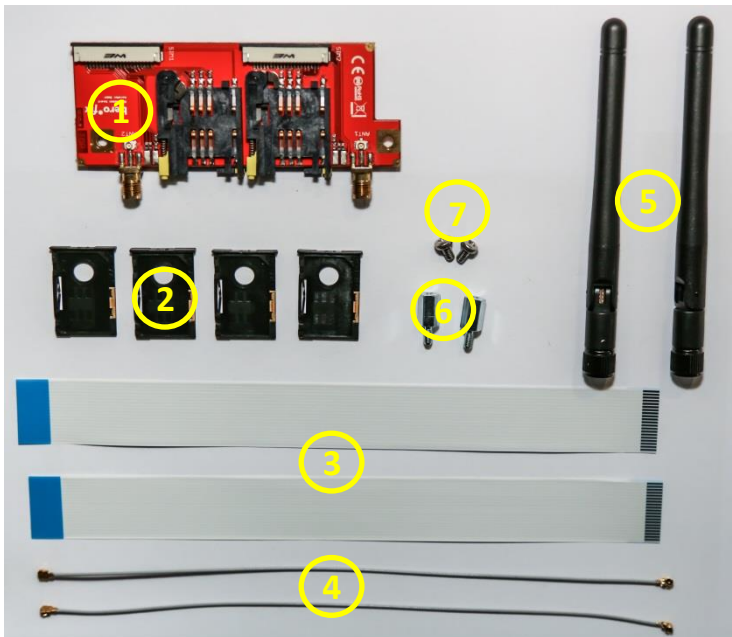
Push the top cover back in and place the back plate back on.

Insert the 4 SIM holders into the GSM_Extension Kit and attach the antennas.

Done!



3. Mounting GSM_Extension Kit

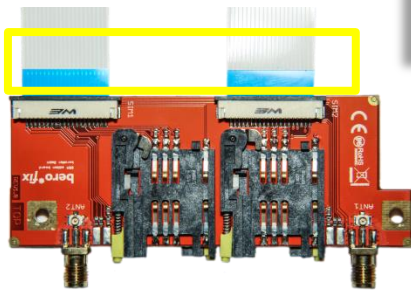
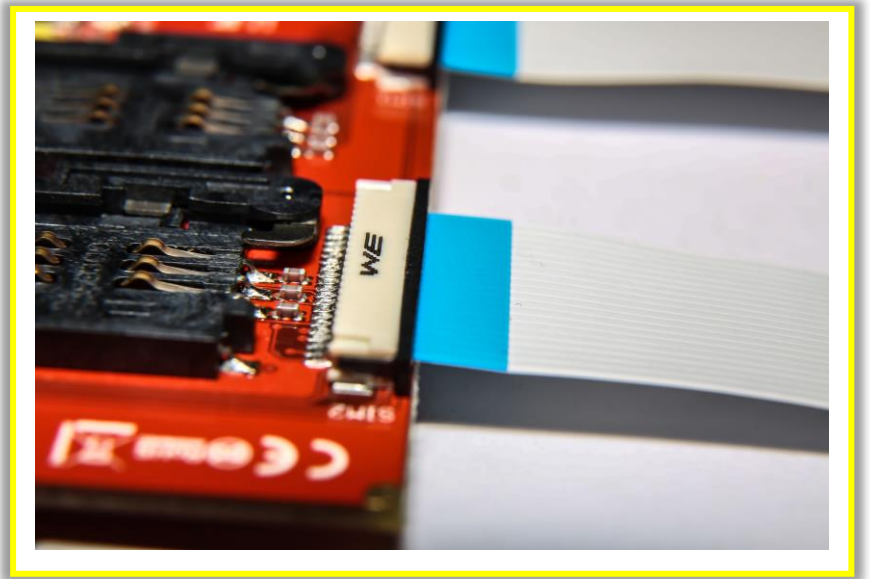


Content:

- 1. 1x Extension Board
- 2. 4x SIM holder
- 3. 2x SIM cable long
- 4. 2x Antenna cable long
- 5. 2x GSM Antenna
- 6. 2x GSM bolts
- 7. 2x Lenshead screw

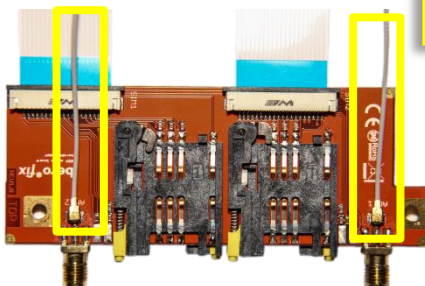
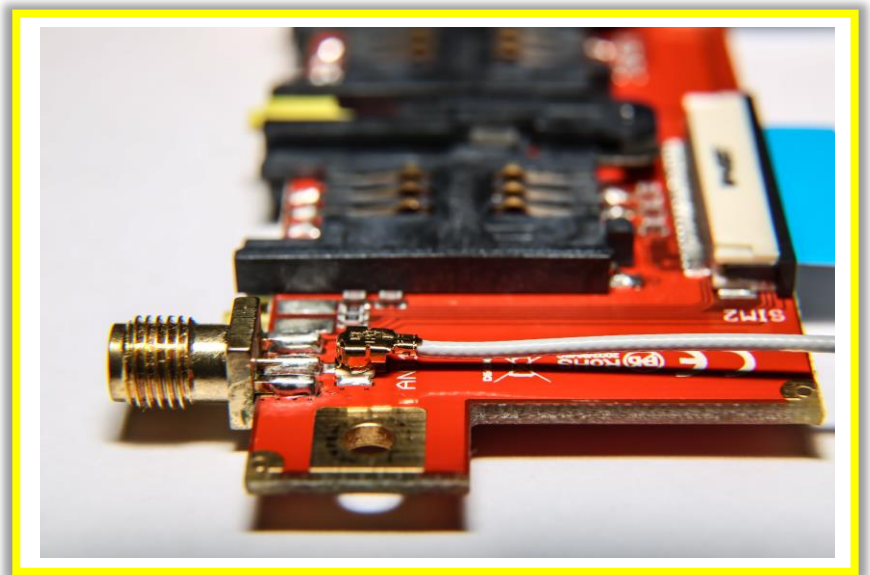
Step 1:

Connect the 2 SIM cables face up to the GSM Extension board.



Step 2:

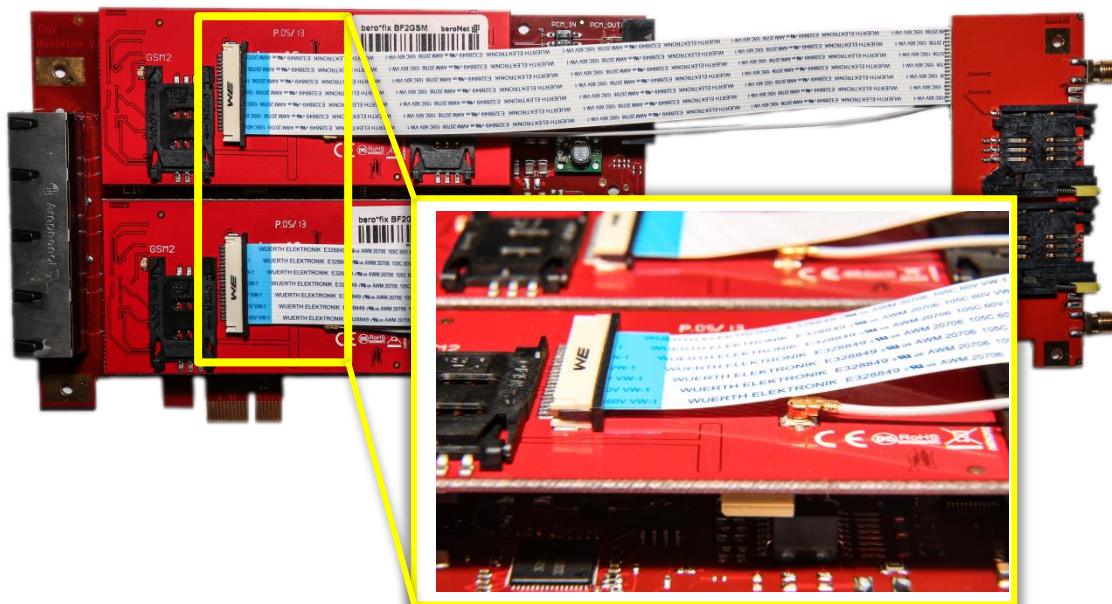
Connect the 2 antenna cables to the GSM Extension board.



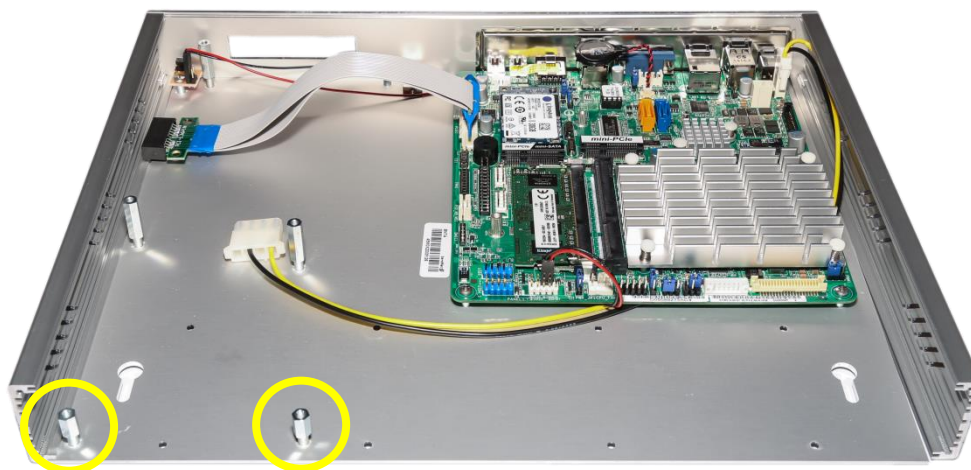
Step 3: Before attaching the GSM_Extension Kit to the beroNet Gateway PCIe-Card you have to upgrade it with GSM modules.

Remember: In case of using a single 2GSM module it is recommended to place it on the LineInterface 1 (LI1) because of its integrated BFBridge.

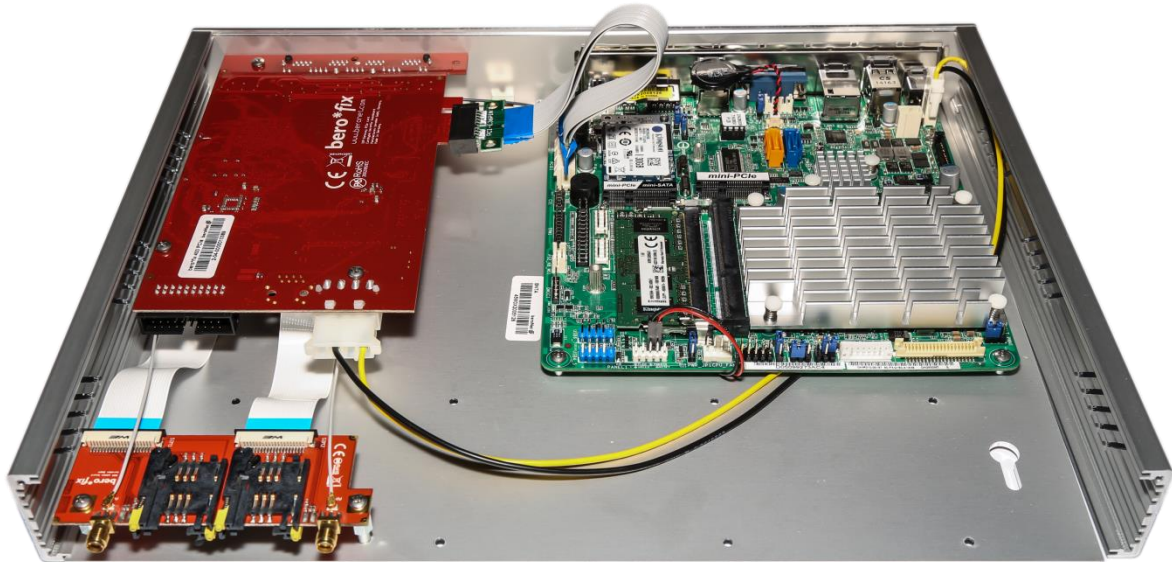
After the PCIe-Card has been upgraded with the modules the GSM_Extension Kit may be attached to the modules.



Step 4: Attach the 2 mounting bolts.



Step 5: Now the GSM_Extension Kit may be attached alongside the PCIe-Card. To mount the GSM_Extension Kit use the included lenshead screws.



Step 6: Push the top cover back in and place the back plate back on. Insert the 4 SIM holders into the GSM_Extension Kit and attach the antennas. Done!

